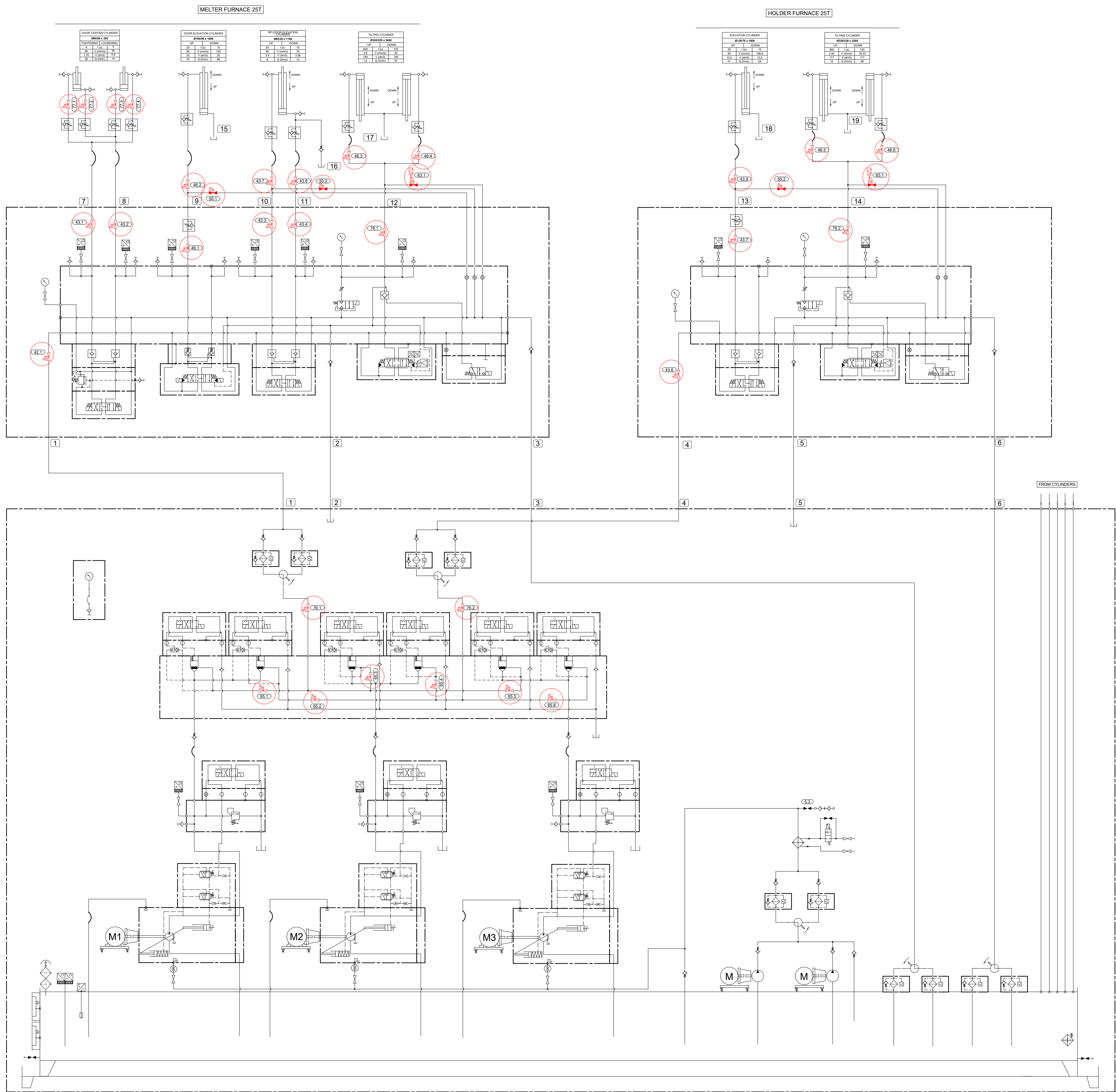




Pos.	Qty	Type	Description	Manufacturer
1	1	GL001575	Tank and components	GLJAL
2	1	AS25APM12801	Level gauge	Mpfitli
3	1	EP303W2-1	Filter / Breather	HyDAC
4	1	ABZMS41-2X5500/20DC-K24	Level and Temperature Sensor	Boos/Roerhth
5	3	CM16-1	2-Way Ball Valve	Cambro
6	12	120192	Antivibration Bolt	AMC
7	13	1450pm 400R80V 50Hz 22kV 83 BS E15	Electric motor	Siemens
8	3	AXMM6202234	Support coupling	Mpfitli
9	1	A1A10VS07 D1 DFRI131R-VP42M00	Asial Piston Pump Variable Displacement	Boos/Roerhth
10	3	GBD04476	Manifold	GLJAL
11	3	DP02SKX13156	Pressure Relief Valve	Boos/Roerhth
12	9	AWESD30X0FEG24N9K4 + PA102241	43 Directional Control Valve	Mpfitli
13	3	CA32	Check Valve	Boos/Roerhth
14	15	BKH-DN114-4424 ( INOX )	2-Way Ball Valve	MHA
15	11	HEDE 10-3K25011-4 Ge K35-V	Pressure Filter	Boos/Roerhth
16	28	M162 - 3 IN 1/4" - CAD003156	Teelport	GLJAL
17	1	GPLN4329	Manifold	GLJAL
18	6	LC16R0207X	2-Way Cartridge	Boos/Roerhth
19	6	LF416GWA-7X	Cartridge Coue For Mounting Directional Control Valve	Boos/Roerhth
20	6	M.SR80201X	Check Valve	Boos/Roerhth
21	2	BKH-DN32-G1 1/2-132A	3-Way Ball Valve	MHA
22	4	MOF 5N 160 E 5 GD 15 /V-110VB6	Pressure Filter	HYDAC
23	4	VO 5N 6 GD /V-110	Electrical Indicator	HYDAC
24	4	CA38	Check Valve	Boos/Roerhth
25	2	P224-1X030R40V7E4	Geat Pump	Boos/Roerhth
26	2	AXAM3201070	Support coupling	Mpfitli
27	2	1450pm 320400V 50Hz 2.2kW B3B5 E15	Electric motor	Siemens
28	4	CA32	Check Valve	Boos/Roerhth
29	1	CA328	Check Valve	Boos/Roerhth
30	30	BKH-DN32-G1 1/4-132A	3-Way Ball Valve	MHA
31	2	LPF 5N 240 G 5 E 12 GD 15 /V-113-A2-B3	Pressure Filter	HYDAC
32	1	TPL 00L12-11	Water/Oil cooler	Funk
33	1	CA322	Check Valve	Boos/Roerhth
34	1	E RAP 1"	Fast coupling of filling point	Comercial
35	4	PT 5N 60 D 10 GD 11-1 /V-120	Relief filter	HYDAC
36	4	VR 2 GD /V-120	Electrical Indicator	HYDAC
37	2	PN16-DN50-3W-L5 (8.16-11.0009E-1)	3-Way Ball Valve	NEWHYDRA
38	1	GPL00491	Manifold	GLJAL
39	3	Z2316-1.5X	Sandwich Check Valve	Boos/Roerhth
40	1	DR10D1P1-SX150YM	Sandwich Pressure Reducing Valve	Boos/Roerhth
41	3	4WE103WEG24N9K4M	43 Directional Control Valve	Mpfitli
42	1	MPKPSAE-SAEFS2-10-DN32-112A - LD	2-Way Ball Valve	MHA
43	8	BKH-DN20-G3/4-112A - LD	2-Way Ball Valve	MHA
44	1	Z2316-1.5X	Sandwich Check Valve	Boos/Roerhth
45	1	H-4WE103WEG24N9K4TK4B1003	43 Directional Control Valve	Boos/Roerhth
46	6	BKH-DN32-G1 1/4-112A - LD	2-Way Ball Valve	MHA
47	6	DRV20-1-10XV	Throttle Check Valve	Boos/Roerhth
48	2	BVES R32-4P	22 Directional Sealed Valve	MHA
49	2	WED-LW1	Fully Adjustable Needle Valve	Sun
50	3	BKH-DN10-G3/8-112A - LD	2-Way Ball Valve	MHA
51	2	SLOPA1-4X	Check Valve Pilot To Open	Boos/Roerhth
52	8	1202051	Antivibration Bolt	AMC
53	2	5.812	Intermediate Plate	GLJAL
54	2	AWESD60K1X0380C24N9K4	32 Directional Control Valve	Boos/Roerhth
55	1	230400V 0.75W/cm RRB-1500W	Ceramic heater	Pellicer
56	4	10MM-EV-250	Pressure gauge	Wika
57	2	CA10	Check Valve	Boos/Roerhth
58	1	SA3C3RDS-21-Ge	Check Valve	Bucher
59	6	DRV10-1-10XV	Throttle Check Valve	Boos/Roerhth
60	1	GPL00492	Manifold	GLJAL
61	2	4WRL6E100L4-XMPY24F1	4/3 Proportional Directional Control Valve	Boos/Roerhth
62	2	BKH-DN10-G3/8-112A - LD - (LSNC)	2-Way Ball Valve	MHA
63	2	DRV16-1-10XV	Throttle Check Valve	Boos/Roerhth
64	6	PKH-DN20-112A -LD	2-Way Ball Valve	MHA
65	3	BKH-DN10-G3/8-112A	2-Way Ball Valve	MHA
66	1	EV31-20	Water Valve	DAMFOSS
67	1	CM16-1.5-4	2-Way Ball Valve	Cambro
68	1	CA25	Check Valve	Boos/Roerhth
69	1	FLEXIBLE 2M	Flexible hose	Wika
70	1	63-MM-EV-250	Pressure gauge	Wika
71	3	5.812	Intermediate Plate	GLJAL
72	1	QSB055527	Table Support	GLJAL
73	1	QSB055529	Table Support	GLJAL
74	1	CMC00010-L+xxxxmm	Level switch	GLJAL
75	1	MPKPD20-DN40-G1 1/2-112A - LD	2-Way Ball Valve	MHA
76	4	BKH-DN13-G1/2-112A - LD	2-Way Ball Valve	MHA
77	2	MPKPD40-DN40-G1 1/2-112A - LD	2-Way Ball Valve	MHA
78	2	VO 2 GD /V-113	Electrical Indicator	HYDAC

[illegible]

NOTES:  
FOR THE OIL FLOW THAT GOES TO MELTER FURNACE 35T , WE CAN HAVE THE COMBINATION OF THE ALL MOTOR PUMP ( M1, M2 AND M3) OIL FLOW INLETS  
FOR THE OIL FLOW THAT GOES TO HOLDER FURNACE 35T , WE CAN HAVE THE COMBINATION OF THE ALL MOTOR PUMP ( M1, M2 AND M3) OIL FLOW INLETS



Pos.	Qty.	Type	Description	Manufacturer
42	1	MKHPSAE-SAEFS210-DN32-112A + LD	2 Way Ball Valve	MHA
43	9	BKH-DN20-G3/4-112A + LD	2 Way Ball Valve	MHA
46	6	BKH-DN25-32-G1-1/4-112A + LD	2 Way Ball Valve	MHA
50	3	BKH-G3/8-112A + LD	2 Way Ball Valve	MHA
63	2	BKH-G3/8-112A + LD + LS(NC)	2 Way Ball Valve	MHA
65	6	PKH-DN20-112A + LD	2 Way Ball Valve	MHA
76	2	MKHP420-DN32-38S-112A + LD	2 Way Ball Valve	MHA
77	4	BKH-G1/2-DN13-112A + LD	2 Way Ball Valve	MHA
78	2	MKHP420-DN40-G1 1/2-112A + LD	2 Way Ball Valve	MHA

PRELIMINARY  
04/11/2025

LOTO SYSTEM			
This document is property of Glual Hydraulics. Not to be used, disclosed, or copied without its written consent.			
<b>GLUAL</b> hydraulics	Drawn : T.Borisov	Drawn date: 17/03/2025	
	Designed : I.Aranguren	Checked date: 04/11/2025	
Checked : A. Aguirre		Page Nº : 3 / 3	Rev: A
ASSEMBLY DRAWING GME006701	CUSTOMER INDUSTRIAL FURNACES INSERTEC S.L.U.		
HYDRAULIC DRAWING GES007578	PROJECT NAME HYDRAULIC POWER UNIT FOR CASTING 2558-5521-GEN-B-DWG-HSCH		